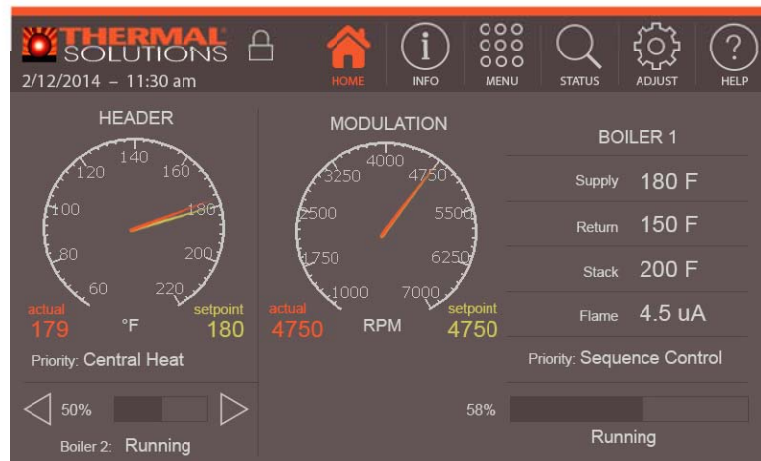


# CONCERT™ BOILER CONTROL



## Advanced Commercial Boiler Control ... Putting Your System in Tune

The Concert™ Boiler Control includes features and functions designed to save energy, optimize long-term efficiency, and integrate seamlessly with all Energy Management Systems (EMS). Built on a proven control platform, these features are Unique, Specifiable, and unavailable from other suppliers.

### Unique Specifiable Features

- Complete EMS Interface - Read and write firing rate demand & setpoint; if loss of EMS, defaults to local control
- A.I.D. (Advanced Input Determination) - Firing rate and water temperature based algorithms for multiple boilers
- USB Data Sharing Port - Input, update, download settings and historical data
- Factory Default Settings - Restore control parameters back to factory settings
- Real Time BTU/Hr Display
- Time/Date Stamp - Store 3,000 hard & soft lockouts and faults (sensor, EMS signal, sequencer and limit string)
- Four (4) Month History - Collect and store supply & return temperature, flame intensity and firing rate
- Two (2) Boiler Start/Stop Trigger – Support large domestic hot water demands

### USB Data Sharing Port

- Simplifies Commissioning – Upload/download settings from one boiler to the next
- Aids Troubleshooting - Allows settings and fault history to be shared with factory for consultation
- Enhances Performance Analysis - Historical operation trends can be saved in .CRV formatted files



## Intuitive Icon Navigation

- [Single Menu](#) - Quick setup menu makes programming a breeze
- [Troubleshooting Guide](#) - Pinpointing & fixing faults has never been easier
- [Advanced data archives](#) - Powerful historical data & graph analysis
- [Comprehensive Operations](#) – Review, adjust & manage for best efficiency
- [Always EMS Capability](#) - Interface via Modbus , 4-20mA or 0-10v
- [Menu Icons Made Easy](#) – Get to where you going seamlessly



## Self-Guiding Diagnostics

- [Industry-Leading Fault Identification and Correction](#)
- [Accessible](#) - HELP Icon always visible, always available
- [Factory Reset](#) - Default to “as shipped” settings for fresh start
- [Vast Historical Info](#) - Archived alarms & working history helps in resolution



## Unmatched Archives Data

- [Largest Data Library](#) - 3,000 alarms & events stored, even after power cycle
- [Ultimate Resource](#) – Aids commissioning, optimization & troubleshooting
- [Extensive Operational Trending](#) - 4 months of historical operational data
- [Graphical Displays Boosts Evaluation](#) - Makes it easier to analyze & adjust



## Optional System Enhancements

- [Vari-Speed Pump](#) - Provides 0-10vdc variable speed pump output for energy savings
- [Motorized Isolation Valves](#) – Maintain energy-efficient flow requirements for variable flow systems
- [0-10vdc Input](#) - Converts 0-10vdc signal from EMS to 4-20mAadc for our control
- [Wireless Outdoor Sensor](#) - Saves installation time
- [BACnet, LonWorks & ModBus](#) – Communication gateway translates effectively to various EMS protocols

